

**AMI WASTE PRODUCTS**



[www.amiattachments.com](http://www.amiattachments.com)



# EXCAVATORS



## GRAPPLES



DEMOLITION GRAPPLE

**STRENX** **HARDOX**

*Extractor*



ROTATING DEMOLITION & SORTING GRAPPLE

**STRENX** **HARDOX**

*Extractor*



SEVERE DUTY ROTATING DEMOLITION & SORTING GRAPPLE

**STRENX** **HARDOX**

*Extractor*



NON-ROTATING DEMOLITION & SORTING GRAPPLE

**STRENX** **HARDOX**

*Extractor*



NON-ROTATING SEVERE DUTY SORTING & DEMOLITION GRAPPLE

**STRENX** **HARDOX**



## THUMBS



HYDRAULIC WELD ON THUMB

**STRENX**  
PERFORMANCE STEEL



EXTREME SERVICE STICK PIVOT  
HYDRAULIC THUMB

**STRENX**  
PERFORMANCE STEEL

**HARDOX**  
IN HY BODY



EXTREME SERVICE PROGRESSIVE LINK  
HYDRAULIC THUMB

**STRENX**  
PERFORMANCE STEEL

**HARDOX**  
IN HY BODY

**Graptor**



GRAPTOR® BUCKET

**STRENX**  
PERFORMANCE STEEL

**HARDOX**  
IN HY BODY

**JAW  
BONE**



JAWBONE BUCKET

**STRENX**  
PERFORMANCE STEEL

**HARDOX**  
IN HY BODY



LETSDIG18 STICK PIVOT HYDRAULIC THUMB

**STRENX**  
PERFORMANCE STEEL



## THUMBS cont'd



STICK PIVOT HYDRAULIC THUMB

**STRENX**  
PERFORMANCE STEEL



LETSDIG18 PROGRESSIVE LINK HYDRAULIC THUMB

**STRENX**  
PERFORMANCE STEEL



PROGRESSIVE LINK HYDRAULIC THUMB

**STRENX**  
PERFORMANCE STEEL

## PULVERIZER



CONCRETE PULVERIZER

**STRENX** **HARDOX**  
PERFORMANCE STEEL

## BUCKETS



HEAVY DUTY DIGGING BUCKET

**STRENX** **HARDOX**  
PERFORMANCE STEEL



GRAPTOR® DEMOLITION BUCKET

**STRENX** **HARDOX**  
PERFORMANCE STEEL

## TILTROTATORS

**AXXIS TR**  
POWERED BY NOX



AXXIS™ TILTROTATOR PIN GRAB COUPLER

**STRENX**  
PERFORMANCE STEEL

**AXXIS TR**  
POWERED BY NOX



AXXIS™ TILTROTATOR S-LOCK COUPLER

**STRENX**  
PERFORMANCE STEEL

**AXXIS TR**  
POWERED BY NOX



AXXIS™ TILTROTATOR WEDGE COUPLER

**STRENX**  
PERFORMANCE STEEL

## TILT COUPLERS



POWERTILT MECHANICAL PIN GRAB COUPLER

**STRENX**  
PERFORMANCE STEEL



POWERTILT MECHANICAL WEDGE COUPLER

**STRENX**  
PERFORMANCE STEEL



POWERTILT HYDRAULIC PIN GRAB COUPLER

**STRENX**  
PERFORMANCE STEEL

## COUPLERS



POWERTILT HYDRAULIC WEDGE COUPLER

**STRENX**  
PERFORMANCE STEEL



HYDRAULIC PIN GRAB COUPLER

**STRENX**  
PERFORMANCE STEEL

**POWER WEDGE**



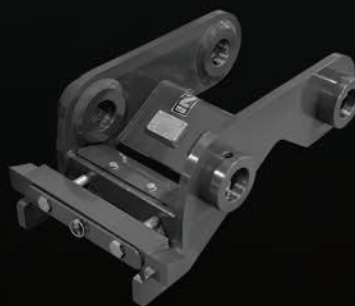
HYDRAULIC WEDGE COUPLER

**STRENX**  
PERFORMANCE STEEL



MECHANICAL PIN GRAB COUPLER

**STRENX**  
PERFORMANCE STEEL



MECHANICAL WEDGE COUPLER

**STRENX**  
PERFORMANCE STEEL

# WHEEL LOADERS



## COUPLER

## BUCKETS



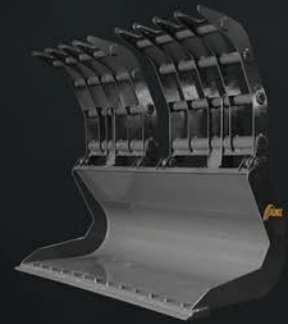
HYDRAULIC COUPLER

**STRENX**  
PERFORMANCE STEEL



HIGH DUMP BUCKET

**STRENX** **HARDOX**  
PERFORMANCE STEEL IN THE BODY



SCRAP GRAPPLE BUCKET

**STRENX**  
PERFORMANCE STEEL



GARBAGE GRAPPLE BUCKET

**STRENX** **HARDOX**  
PERFORMANCE STEEL IN THE BODY



WASTE PILING BUCKET

**STRENX** **HARDOX**  
PERFORMANCE STEEL IN THE BODY



WASTE HANDLING BUCKET

**STRENX** **HARDOX**  
PERFORMANCE STEEL IN THE BODY



## BUCKETS cont'd



EXTREME SERVICE SPADE NOSE ROCK BUCKET

**STRENX** **HARDOX**



SEVERE DUTY SPADE NOSE ROCK BUCKET

**STRENX** **HARDOX**

**KICKBOX**



KICKBOX EJECTOR BUCKET

**STRENX** **HARDOX**

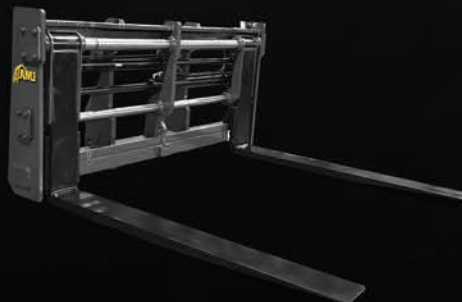
## ROTARY SWEEPERS

**KINGSPIN**

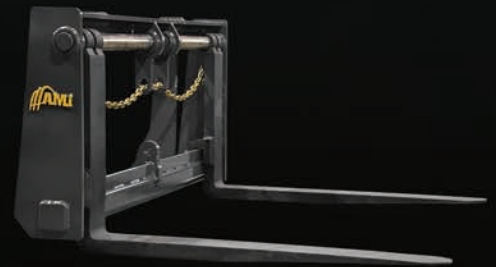


HYDRAULIC ROTARY SWEEPER

## FORKS



FORK RACK WITH HYDRAULIC TINE POSITIONERS



FORK RACK (SHAFT TYPE TINE)



Nerves of steel is what it takes to supply AMI Attachments with raw materials that stand up to the harsh conditions you face everyday. That's why inside most of our extreme duty products is Hardox® steel, a recognized name in steel that is synonymous with strength, durability and trust.

Hardox® wear steel provides a unique combination of hardness and toughness, resulting in first-class products that are manufactured to weigh less, withstand abrasion, perform better, carry more payloads and last longer—all under the harshest conditions.

Working in partnership, Hardox® is an approved supplier and AMI Attachments is a certified “Hardox® in My Body” member. Together, this means high performance products that are built with a toughness that goes unmatched.

When you see the “Hardox® in My Body” trademark logo on our attachment products, you can be guaranteed that the equipment is manufactured from genuine Hardox® wear steel, delivering exceptional wear-resistance and impact strength.

So whether you're digging, ripping, piling or pulverizing, go ahead and power through it with confidence, because it's not called an AMI Attachment before its mettle is tested.



In the constant battle for higher-performing steel products, strong and thin win. You need stronger steel in thinner dimensions to make products stronger yet lighter and more sustainable. That's why we developed Strenx™, our extensive portfolio of high-strength, high-performance structural steels.

Strenx™ has one of the world's most extensive product programmes, both in terms of dimensions available, and with yield strengths ranging from 600 to 1300 MPa. Strenx™ can produce outstanding results in the hands of ambitious designers who can cut 20 to 30 percent or even more weight off steel structures. Strenx™ helps your products — and your business — reach new levels of performance.



**Authorized Dealer**



**1.800.556.9452**

Phone: (519) 699-0387 Fax: (519) 699-0440

1270 Geddes St., Hawkesville, ON, Canada N0B 1X0

**[www.amiattachments.com](http://www.amiattachments.com)**



#amiattachments